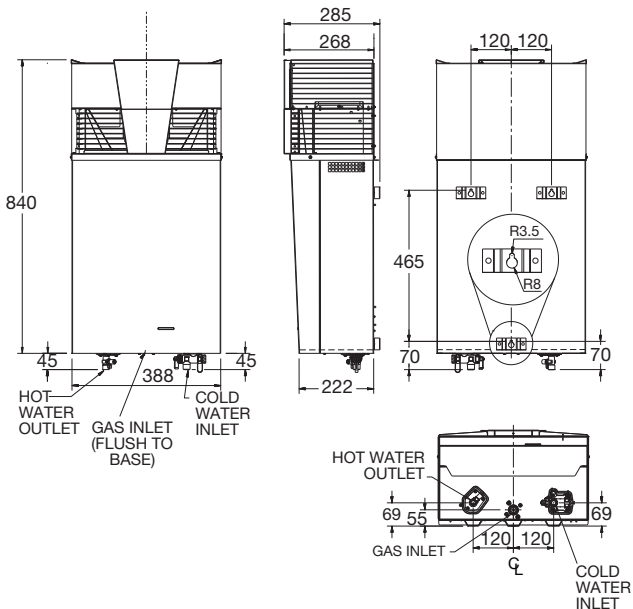




Features & Benefits

- Easy installation matching common mechanical water heater fittings
- 6 Star energy efficiency
- 12 L/min continuous hot water delivery @ 25°C rise
- Electronic temperature control
- Overheat protection
- No electrical connection required
- Available in natural and propane
- Heat shield available - 299880
- 10 year heat exchanger warranty¹



MODEL	834012
Min. Operating Flow rate (L/min)	3.0
Nom. Gas Consumption (MJ/hr)	99 Natural
Nom. Gas Consumption (MJ/hr)	96 Propane
Max Water Supply Pressure (kPa)	800
Min Water Supply Pressure (kPa)	120
Water Connections	R 1/2
Gas Connection	Rp 3/4
Approx. Weight (Empty) kg	21



Scan code for details & installation instructions

