

SERVICE CONNECTIONS PROVIDED:

- (1) HOT WATER OUTLET
50MM BSP FEMALE BRASS BALL VALVE
- (2) NATURAL GAS/LPG INLET
50MM BSPT MALE
- (3) COLD WATER INLET
50MM BSP FEMALE BRASS BALL VALVE
- (4) HOT WATER RETURN
25MM BSP FEMALE BRASS BALL VALVE/STRAINER COMBINATION
- (5) PRESSURE RELIEF VALVE OUTLET
20MM BSP FEMALE TO DRAINAGE

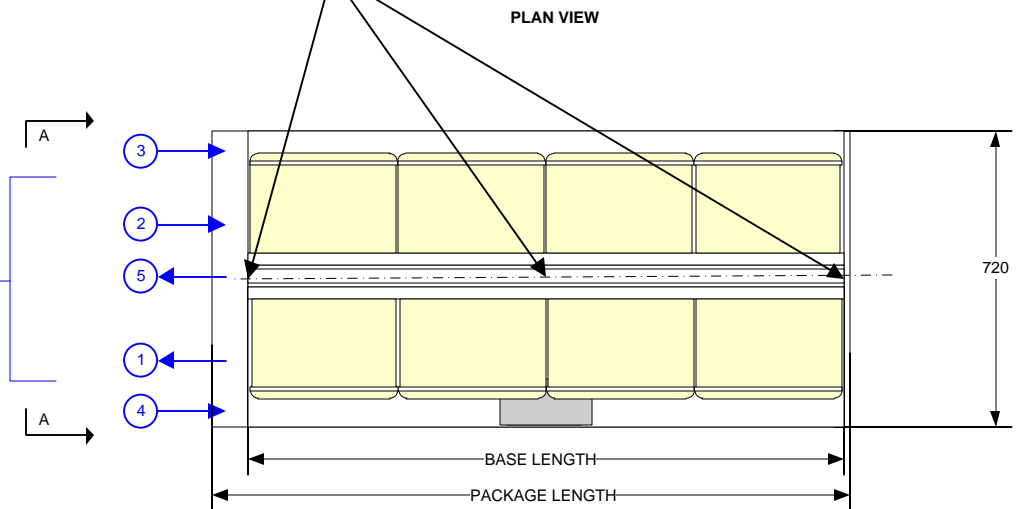
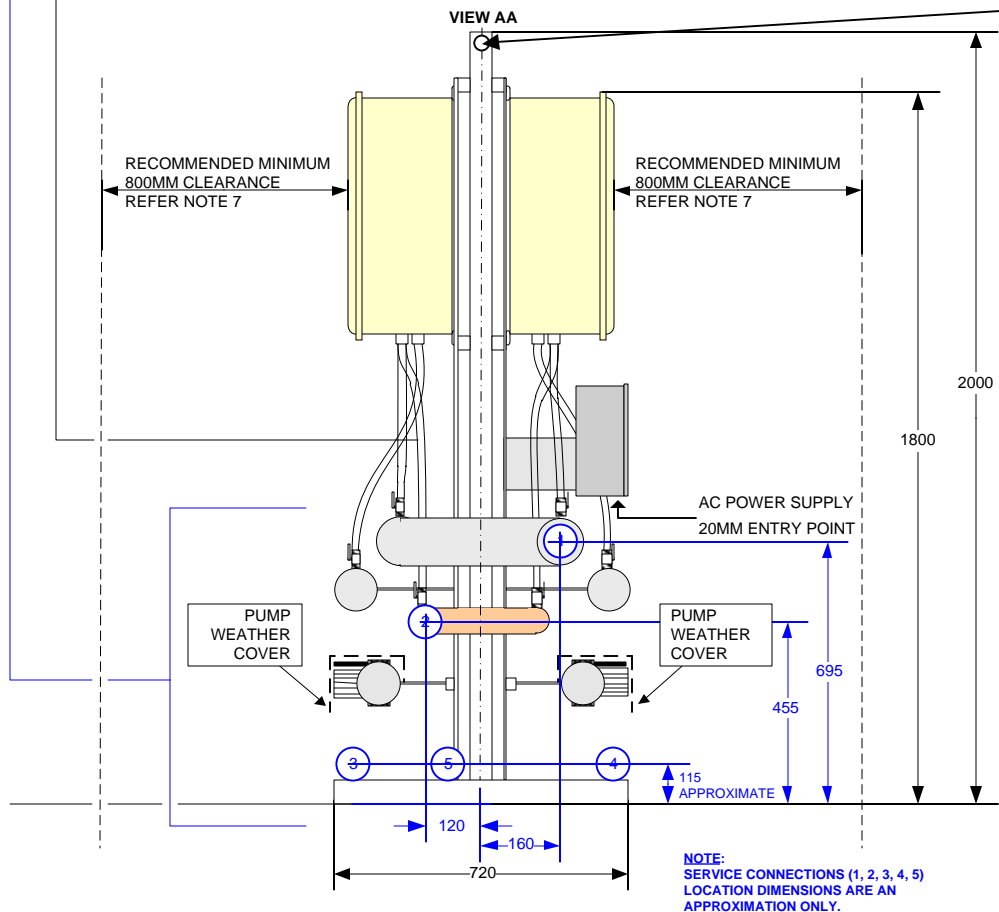
POWER SUPPLY REQUIREMENTS : 240V/1PH/50HZ – 20A C OR D CURVE UP FRONT PROTECTION PROVIDED
: IP55 CONTROL BOX PRE-WIRED TO WATER HEATERS & PUMPS

NOTES:

- 1. THIS UNIT IS SUITABLE FOR A FLOW & RETURN OR DEAD LEG SYSTEM.
- 2. EACH WATER HEATER IS PROVIDED WITH A 240VAC GENERAL PURPOSE POWER OUTLET EACH PUMP IS PROVIDED WITH A 240VAC DEDICATED PURPOSE POWER OUTLET ALL POWER OUTLETS ARE PREWIRED TO THE HOT WATER SYSTEM IP55 CONTROL BOX SUPPLY & INSTALLATION OF 240VAC POWER TO THE CONTROL BOX IS BY OTHERS & SHALL BE IN ACCORDANCE WITH AS/NZS 3000
- 3. GAS SUPPLY & ALL PLUMBING THEREOF IS BY OTHERS & SHALL BE IN ACCORDANCE WITH AS5601
- 4. WATER SUPPLY TO & FROM & ALL PLUMBING THEREOF IS BY OTHERS & SHALL BE IN ACCORDANCE WITH AS3500
- 5. ALL DIMENSIONS ARE IN MM UNLESS OTHERWISE STATED.
- 6. SUITABLE FOR OUTDOOR INSTALLATION ONLY.
- 7. SPACING : RECOMMENDED MINIMUM 800MM CLEARANCE FROM HORIZONTAL FLUE OUTLET. REFER AS5601-2004 FIG 5.3 FOR MANDATORY REQUIREMENTS.
- 8. REFER TO INSTALLATION AND OPERATING INSTRUCTION MANUAL FOR ADDITIONAL DETAILS.
- 9. DRAWING SUBJECT TO CHANGE WITHOUT NOTICE.

LIFTING INSTRUCTIONS:

- 1. PACKAGE LIFTING: TWO (2) OR THREE (3) POINTS
- 2. REMOVABLE CIRCULAR HOLLOW STEEL TUBE INSERTED ACROSS THE TOP. LOCKED IN PLACE WITH LOCKING INSERTS. EDGES FITTED WITH CROSS BOLT TO PREVENT LIFTING CHAIN FROM SLIPPING OFF.
- 2. LIFT TO BE CONDUCTED ONLY WHEN WIND SPEED IS LESS THAN 23 KM/HR. WIND SPEED SHOWN IS A GUIDE ONLY. CRANE CREW TO USE THEIR DISCRETION
- 3. MAXIMUM HOISTING VELOCITY 1.0M/S
- 4. CARE SHALL BE TAKEN WHILE LIFTING TO ENSURE LIFTING CHAINS ARE EVENLY LOADED BY GENTLY TAKING THE LOAD TO JUST OFF THE GROUND, EXAMINING AND RETURNING TO GROUND PRIOR TO LIFT.



MODEL	CPE07	CPE08	CPE09	CPE10	CPE11	CPE12
BASE LENGTH	1620	1620	1980	1980	2340	2340
PACKAGE LENGTH	1980	1980	2340	2340	2700	2700

NO	DATE	REVISION	BY	CHECKED
0	07/10	ORIGINAL ISSUE	SL	RH
1	08/10	DIMENSIONAL UPDATES	SL	RH
2	01/11	DESIGN UPGRADES	SL	RH

RHEEM AUSTRALIA PTY LTD
 1 Alan Street
 Rydalmere NSW 2116
 Email : commercialsales@rheem.com.au
www.rheem.com.au

DESCRIPTION:
 Rheem Commpak Plus – CPE07 – CPE12
 Commercial Mains Pressure External Hot Water System
 Back To Back General Arrangement

DESIGNED	DRAWN	DATE	SCALE	DRAWING NO:	REVISION
RH	SL	25/01/11	N.T.S	CMPAKD-8E	2