

**SERVICE CONNECTIONS PROVIDED:**

- (1) HOT WATER OUTLET  
50MM BSP FEMALE BRASS BALL VALVE
- (2) NATURAL GAS/LPG INLET  
50MM BSPT MALE
- (3) COLD WATER INLET  
50MM BSP FEMALE BRASS BALL VALVE
- (4) HOT WATER RETURN  
25MM BSP FEMALE BRASS BALL VALVE/STRAINER COMBINATION
- (5) PRESSURE RELIEF VALVE OUTLET  
20MM BSP FEMALE TO DRAINAGE

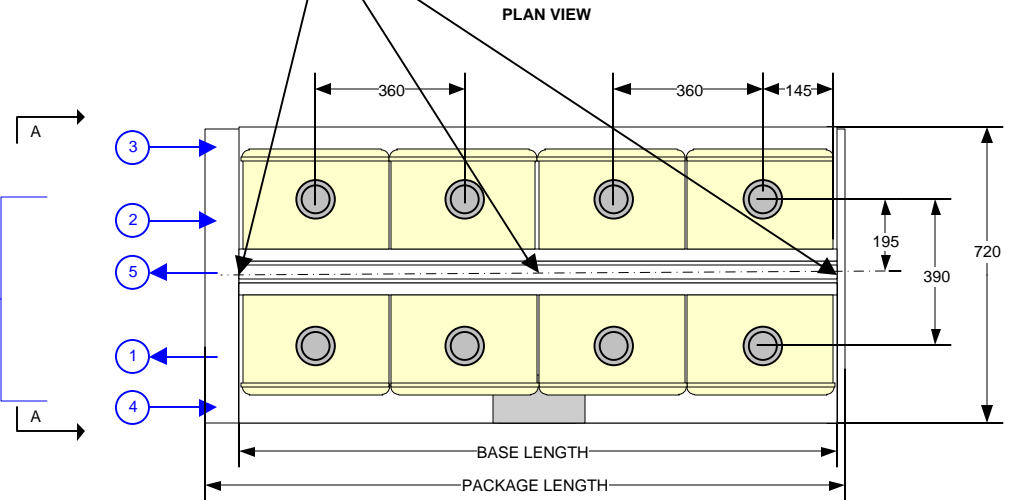
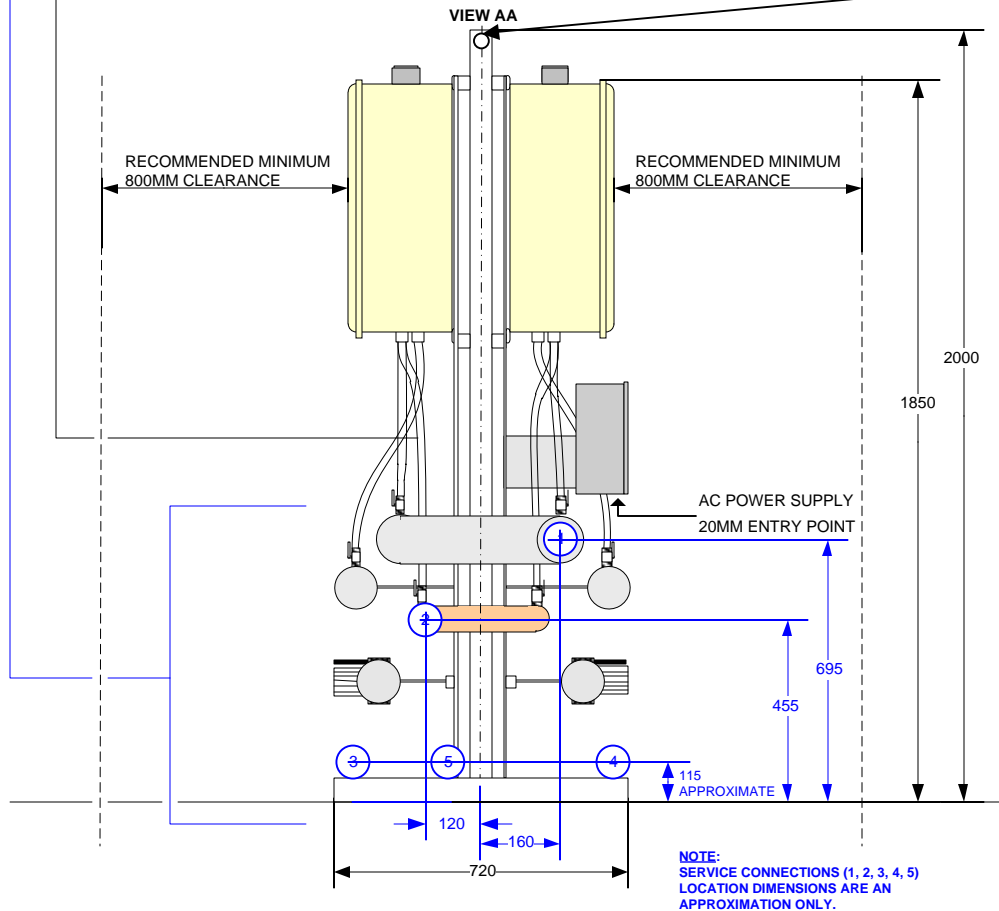
**POWER SUPPLY REQUIREMENTS :** 240V/1PH/50HZ – 20A C OR D CURVE UP FRONT PROTECTION PROVIDED  
: IP55 CONTROL BOX PRE-WIRED TO WATER HEATERS & PUMPS

**NOTES:**

1. THIS UNIT IS SUITABLE FOR A FLOW & RETURN OR DEAD LEG SYSTEM.
2. EACH WATER HEATER IS PROVIDED WITH A 240VAC GENERAL PURPOSE POWER OUTLET  
EACH PUMP IS PROVIDED WITH A 240VAC DEDICATED PURPOSE POWER OUTLET  
ALL POWER OUTLETS ARE PREWIRED TO THE HOT WATER SYSTEM IP55 CONTROL BOX  
SUPPLY & INSTALLATION OF 240VAC POWER TO THE CONTROL BOX IS BY OTHERS & SHALL BE IN ACCORDANCE WITH AS/NZS 3000
3. GAS SUPPLY & ALL PLUMBING THEREOF IS BY OTHERS & SHALL BE IN ACCORDANCE WITH AS5601
4. WATER SUPPLY TO & FROM & ALL PLUMBING THEREOF IS BY OTHERS & SHALL BE IN ACCORDANCE WITH AS3500
5. ALL DIMENSIONS ARE IN MM UNLESS OTHERWISE STATED.
6. SUITABLE FOR INDOOR INSTALLATION ONLY. EACH WATER HEATER TO BE INDIVIDUALLY FLUED TO OUTSIDE USING CERTIFIED RHEEM CO-AXIAL FLUE ONLY.
7. SPACING : RECOMMENDED MINIMUM 800MM CLEARANCE FROM THE FRONT OF THE HEATER.
8. REFER TO INSTALLATION AND OPERATING INSTRUCTION MANUAL FOR ADDITIONAL DETAILS.
9. DRAWING SUBJECT TO CHANGE WITHOUT NOTICE.

**LIFTING INSTRUCTIONS:**

1. PACKAGE LIFTING: TWO (2) TO THREE (3) POINTS
2. REMOVABLE CIRCULAR HOLLOW STEEL TUBE INSERTED ACROSS THE TOP. LOCKED IN PLACE WITH LOCKING INSERTS. EDGES FITTED WITH CROSS BOLT TO PREVENT LIFTING CHAIN FROM SLIPPING OFF.
2. LIFT TO BE CONDUCTED ONLY WHEN WIND SPEED IS LESS THAN 23 KM/HR. WIND SPEED SHOWN IS A GUIDE ONLY. CRANE CREW TO USE THEIR DISCRETION
3. MAXIMUM HOISTING VELOCITY 1.0M/S
4. CARE SHALL BE TAKEN WHILE LIFTING TO ENSURE LIFTING CHAINS ARE EVENLY LOADED BY GENTLY TAKING THE LOAD TO JUST OFF THE GROUND, EXAMINING AND RETURNING TO GROUND PRIOR TO LIFT.



MODEL	CPI07	CPI08	CPI09	CPI10	CPI11	CPI12
BASE LENGTH	1620	1620	1980	1980	2340	2340
PACKAGE LENGTH	1980	1980	2340	2340	2700	2700

NO	DATE	REVISION	BY	CHECKED
0	07/10	ORIGINAL ISSUE	SL	RH
1	08/10	DIMENSIONAL UPDATES	SL	RH
2	01/11	DESIGN UPGRADES	SL	RH

**RHEEM AUSTRALIA PTY LTD**  
 1 Alan Street  
 Rydalmere NSW 2116  
 Email : [commercialsales@rheem.com.au](mailto:commercialsales@rheem.com.au)  
[www.rheem.com.au](http://www.rheem.com.au)

**DESCRIPTION:**  
 Rheem Commpak Plus – CPI07 – CPI12  
 Commercial Mains Pressure Internal Hot Water System  
 Back To Back General Arrangement

DESIGNED	DRAWN	DATE	SCALE	DRAWING NO:	REVISION
RH	SL	25/01/11	N.T.S	CMPAKD-8I	2