

**SERVICE CONNECTIONS PROVIDED:**

- (1) HOT WATER OUTLET  
50MM BSP FEMALE BRASS BALL VALVE
- (2) GAS INLET  
50MM BSPT MALE
- (3) COLD WATER INLET  
50MM BSP FEMALE BRASS BALL VALVE/STRAINER COMBINATION
- (4) HOT WATER RETURN  
25MM BSP FEMALE BRASS BALL VALVE/STRAINER COMBINATION
- (5) PRESSURE RELIEF VALVE OUTLET  
20MM BSP FEMALE TO DRAINAGE

**POWER SUPPLY REQUIREMENTS :** 240V/1PH/50HZ – 20A C OR D CURVE UP FRONT PROTECTION PROVIDED  
: IP55 CONTROL BOX PRE-WIRED TO WATER HEATERS & PUMPS

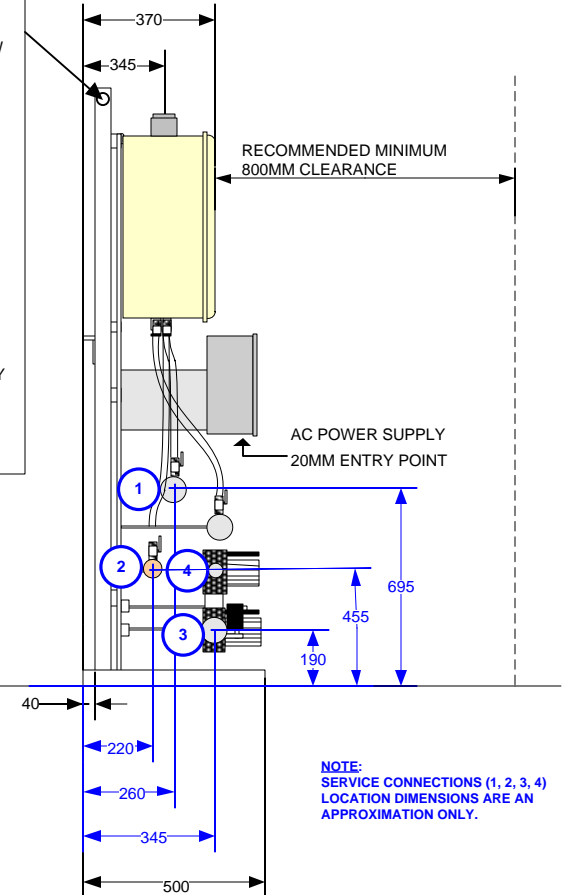
**NOTES:**

- 1. THIS UNIT IS SUITABLE FOR A FLOW & RETURN OR DEAD LEG SYSTEM.
- 2. EACH WATER HEATER IS PROVIDED WITH A 240VAC GENERAL PURPOSE POWER OUTLET EACH PUMP IS PROVIDED WITH A 240VAC DEDICATED PURPOSE POWER OUTLET ALL POWER OUTLETS ARE PREWIRED TO THE HOT WATER SYSTEM IP55 CONTROL BOX SUPPLY & INSTALLATION OF 240VAC POWER TO THE CONTROL BOX IS BY OTHERS & SHALL BE IN ACCORDANCE WITH AS/NZS 3000
- 3. GAS SUPPLY & ALL PLUMBING THEREOF IS BY OTHERS & SHALL BE IN ACCORDANCE WITH AS5601
- 4. WATER SUPPLY TO & FROM & ALL PLUMBING THEREOF IS BY OTHERS & SHALL BE IN ACCORDANCE WITH AS3500
- 5. ALL DIMENSIONS ARE IN MM UNLESS OTHERWISE STATED.
- 6. SUITABLE FOR INDOOR INSTALLATION ONLY. EACH WATER HEATER TO BE INDIVIDUALLY FLUED TO OUTSIDE USING CERTIFIED RHEEM CO-AXIAL FLUE ONLY.
- 7. SPACING : RECOMMENDED MINIMUM 800MM CLEARANCE FROM THE FRONT OF THE HEATER.
- 8. REFER TO INSTALLATION AND OPERATING INSTRUCTION MANUAL FOR ADDITIONAL DETAILS.
- 9. DRAWING SUBJECT TO CHANGE WITHOUT NOTICE.

**LIFTING INSTRUCTIONS:**

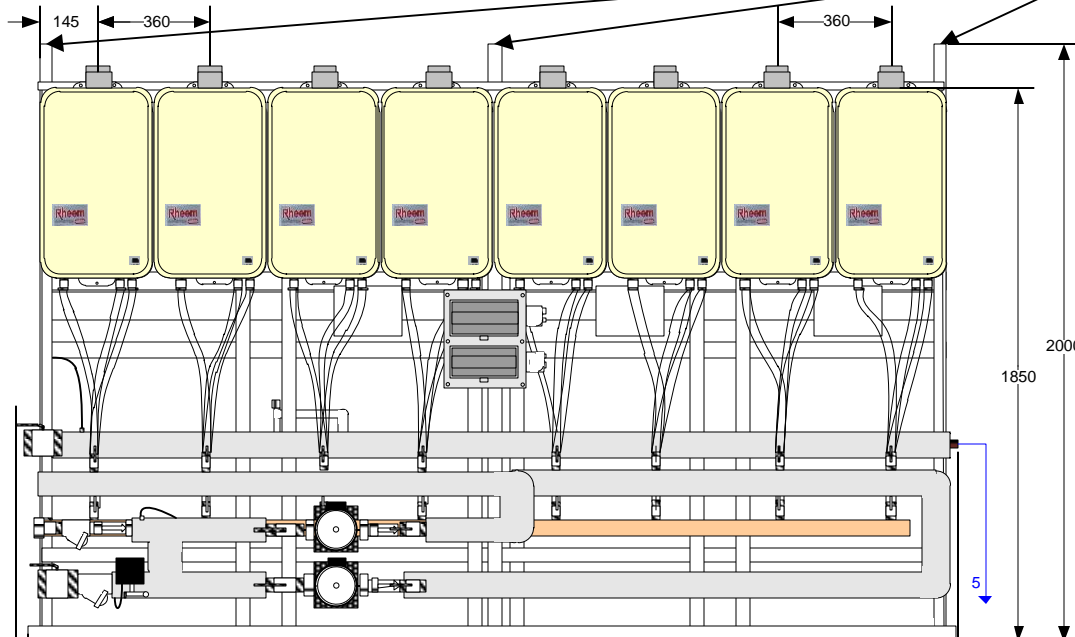
- 1. PACKAGE LIFTING:  
CP7 – CP8 THREE (3) POINTS  
CP9 – CP12 FOUR (4) POINTS
- 2. REMOVABLE CIRCULAR HOLLOW STEEL TUBE INSERTED ACROSS THE TOP. LOCKED IN PLACE WITH LOCKING INSERTS. EDGES FITTED WITH CROSS BOLT TO PREVENT LIFTING CHAIN FROM SLIPPING OFF.
- 2. LIFT TO BE CONDUCTED ONLY WHEN WIND SPEED IS LESS THAN 23 KM/HR. WIND SPEED SHOWN IS A GUIDE ONLY. CRANE CREW TO USE THEIR DISCRETION
- 3. MAXIMUM HOISTING VELOCITY 1.0M/S
- 4. CARE SHALL BE TAKEN WHILE LIFTING TO ENSURE LIFTING CHAINS ARE EVENLY LOADED BY GENTLY TAKING THE LOAD TO JUST OFF THE GROUND, EXAMINING AND RETURNING TO GROUND PRIOR TO LIFT.

**SIDE VIEW**



**NOTE:** SERVICE CONNECTIONS (1, 2, 3, 4) LOCATION DIMENSIONS ARE AN APPROXIMATION ONLY.

**FRONT VIEW**



MODEL	CPI07	CPI08	CPI09	CPI10	CPI11	CPI12
BASE LENGTH	2520	2880	3240	3600	3960	4320
PACKAGE LENGTH	2670	3030	3390	3750	4110	4470

No	DATE	REVISION	BY	CHECKED
0	07/10	ORIGINAL ISSUE	SL	RH
1	08/10	DIMENSIONAL UPDATES	SL	RH
2	01/11	DESIGN UPGRADES	SL	RH

**Rheem Australia Pty Ltd**  
1 Alan Street  
Rydalmere NSW 2116  
Email : [commercialsales@rheem.com.au](mailto:commercialsales@rheem.com.au)  
[www.rheem.com.au](http://www.rheem.com.au)

Description:					
Rheem Compak Plus – CPI07 – CPI12 Commercial Mains Pressure Internal Hot Water System Single Row General Arrangement					
Designed RH	Drawn SL	Date 25/01/11	Scale N.T.S	Drawing No: CMPAKS-8I	Revision 2