

STORAGE TANKS

Market-leading storage tanks from small to large.



CASE STUDY

**AUSTRALIAN NATIONAL UNIVERSITY
CANBERRA, ACT**

Challenge

Union Court Canberra is a new environmentally sustainable student accommodation precinct for 450 students.

Rheem Commercial Air to Water Heat Pumps helped solve the spatial issues by allowing double stacking of 8 x 16 kW horizontal discharge units for the main plant.

Hot Water Solution

The bottom flange of RT Stainless Steel storage tanks were fitted with auxiliary

electric Heating Units providing back-up during low atmospheric temperature intervals. A "soft start" electrical set-up was employed to stage the auxiliary heating units to eliminate sudden electrical load.

Across the entire precinct, Rheem supplied:

- 11 x Rheem 16kW Air to Water (A2W) Commercial Heat Pumps
- 6 x Rheem 2000L RT-Series Storage Tanks with in-tank 30 kW Heating Unit bundles
- 4 x Rheem 1000L RT-Series Storage Tanks with in-tank 15 kW Heating Unit bundles



RHEEM RW SERIES DUPLEX 2205 STAINLESS STEEL

SUITED TO LARGE COMMERCIAL APPLICATIONS IN HARSH WATER AREAS



STORAGE



EASY TO INSTALL



1,000L TO 3,000L CAPACITY



DUPLEX 2205 STAINLESS STEEL

The mains pressure, high capacity storage tank.

WATER MAINS PRESSURE

Stainless Steel tanks with 700kPa operating pressure.

HIGH CAPACITY

Available in nominal 1,000L, 2,000L and 3,000L capacities. Multiple tanks of the same capacity can be manifolded in parallel to store large volumes for reduced footprint and installation flexibility.

EASY TO INSTALL

RW1000 will fit through a single 900mm door and can be installed in replacement situations. Models up to RW3000 tank fits easily through a double 1400mm door.

HIGH PERFORMANCE INSULATION

50mm polyurethane insulation, with a bonded painted steel cladding suitable for outdoor installation.

Polyurethane does not support fungal, mould and mildew growth, and is light weight.

WITHSTANDS HIGH TEMPERATURES

Can store water up to 85°C.

MORE KEY FEATURES

- Available in fully welded 2205 stainless steel for direct water applications
- Highly durable in challenging water quality areas

- Three high flow 50mm water fittings allow for typical heat pump, gas water heaters or waste heat applications
- 1 Sensor well supplied
- Optional Flange plates available for in-series auxiliary boosting or in-tank heating installations

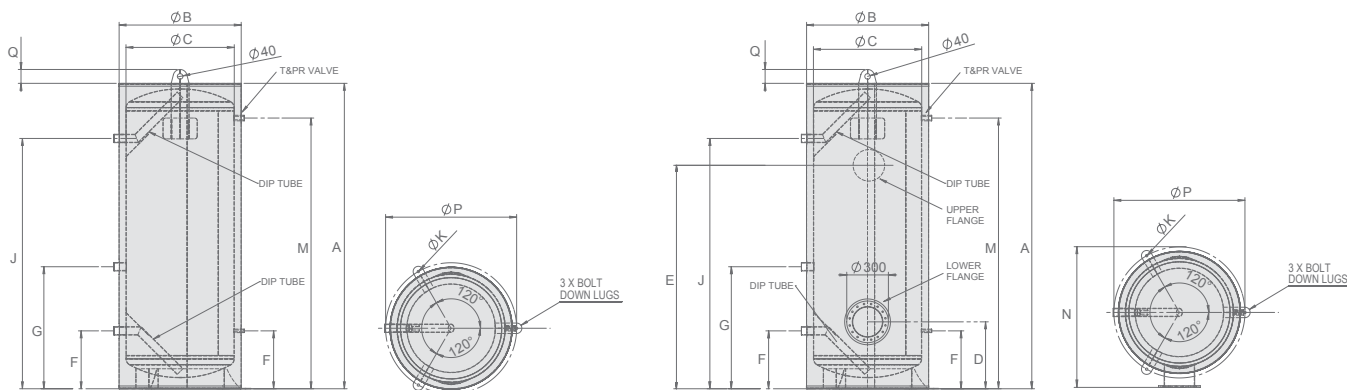


*Conditions Apply: For full terms and conditions please contact Rheem or visit www.rheem.com.au/rheem/help/Warranties

TECHNICAL DATA

DIMENSIONS AND TECHNICAL DATA TABLE										
Model		RW1050N70	RW2050N70	RW3050N70	RW1050N7U	RW2050N7U	RW3050N7U	RW1050N7L	RW2050N7L	RW3050N7L
Storage Capacity	Litres	920	2000	3000	920	2000	3000	920	2000	3000
Dimensions	A	mm	2200	2090	2990	2200	2090	2990	2200	2090
	B	mm	880	1300	1300	880	1300	1300	880	1300
	C	mm	780	1200	1200	780	1200	1200	780	1200
	D - Lower Flange	mm	-	-	-	-	-	-	482	535
	E - Upper Flange	mm	-	-	-	1473	1700	2045	-	-
	F	mm	417	462	505	417	462	505	417	462
	G	mm	879	1024	1135	879	1024	1135	879	1024
	J	mm	1803	1700	2395	1803	1700	2395	1803	1700
	K	mm	17	25	25	17	25	25	17	25
	M	mm	1950	1700	2564	1950	1700	2564	1950	1700
N	mm	980	1400	1400	980	1400	1400	980	1400	
P	mm	944	1380	1380	944	1380	1380	944	1380	
Q	mm	100	110	110	100	110	110	100	110	
Weight Empty	kg	180	330	400	190	340	410	190	340	410
Inlet/Outlet Connections MI BSP	mm	RP2	RP2	RP2	RP2	RP2	RP2	RP2	RP2	RP2
T&PR Valve Outlet Connection BSPF	mm	RP1	RP1	RP1	RP1	RP1	RP1	RP1	RP1	RP1
T&PR Valve Setting	kPa	700	700	700	700	700	700	700	700	700
Expansion Control Valve (ECV) ¹ Setting	kPa	550	550	550	550	550	550	550	550	550
Maximum Water Supply Pressure										
without ECV ¹ fitted	kPa	560	560	560	560	560	560	560	560	560
with ECV ¹ fitted	kPa	450	450	450	450	450	450	450	450	450
Maximum Stored Water Temperature	°C	85	85	85	85	85	85	85	85	85
Manifold - Min. Centre to Centre	mm	1230	1550	1550	1230	1550	1550	1230	1550	1550
Maintenance Rate	kWh/day	5.9	7.9	10.6	7.4	9.3	12.0	7.4	9.3	12.0
Water Capacity above nominated fitting										
Storage Capacity	Litres	920	2000	3000	920	2000	3000	920	2000	3000
Cold Water Inlet	Dim F	Litres	797	1680	2643	797	1680	2643	797	1680
Hot Water Flow/Return	Dim G	Litres	578	1049	1935	578	1049	1935	578	1049
Hot Water Supply	Dim J	Litres	141	289	520	141	289	520	141	289
Upper Flange	Dim E	Litres	-	-	-	297	608	913	-	-
Lower Flange	Dim D	Litres	-	-	-	-	-	-	766	1598

¹ Expansion control valve not supplied with the water heater.



Note: Only one of the 300mm EHU Flanges is used at any time.

RHEEM RT SERIES STAINLESS STEEL

SUITED TO LARGE COMMERCIAL APPLICATIONS



STORAGE



EASY TO INSTALL



HIGH PRESSURE



UP TO 5,000L CAPACITY



SUPERIOR INSULATION

The high pressure, high capacity storage tank.

HIGH PRESSURE

RT Series tanks suit up to 850 kPa operating pressure, which is up to 20% more than competitor tanks of an equivalent size.

HIGH CAPACITY

Available in nominal 1000, 2000, 3000, 4000, 5000L capacities. Multiple tanks of the same capacity can be manifolded in parallel to store larger volumes for reduced footprint and installation flexibility.

EASY TO INSTALL

The only large capacity tank to fit through a single door, the RT1000 tank is just 800mm and can be easily installed in replacement situations. Models up to RT4000 tank fits easily through a double 1400mm door.

HIGH PERFORMANCE INSULATION

100mm polypropylene insulation, with a bonded aluminium cladding suitable for outdoor installation. Polypropylene insulation is fireproof resistant and resistant to rot, moisture, mould, bacteria and rodents, hypoallergenic, 100% recyclable, light weight and self-supporting.

WITHSTANDS HIGH TEMPERATURES

Can store water up to 90°C.

MORE KEY FEATURES

- Available in a fully welded 316L stainless steel for direct water applications
- Flange plates and a variety of high flow 50mm water fittings allow for different auxiliary options such as heat exchange coils (not supplied), electric heating unit bundles, heat pumps, gas water heaters, solar or waste heat
- 4 x sensor well ports provided to suit installation
- 1 x sensor well supplied
- Additional sensor wells may be required, application dependent

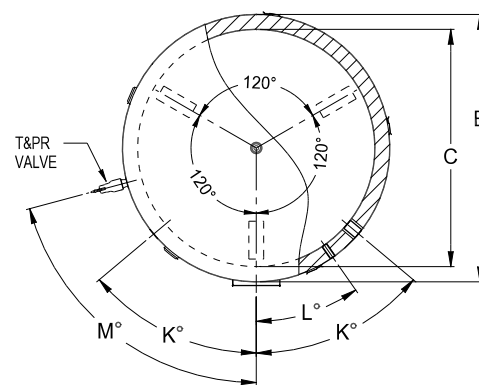
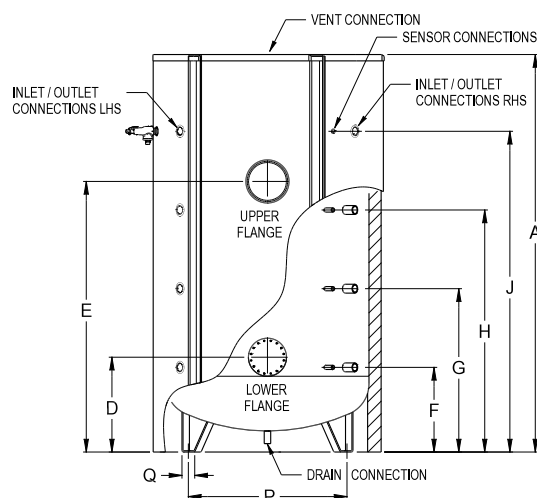


*Conditions Apply: For full terms and conditions please contact Rheem or visit www.rheem.com.au/rheem/help/Warranties

TECHNICAL DATA

DIMENSIONS AND TECHNICAL DATA TABLE							
Model number		RT1000	RT2000	RT3000	RT4000	RT5000	
		Stainless steel / Carbon steel					
Storage capacity	Litres	920	2055	2960	3820	5180	
Dimensions	A	mm	2200	2565	2845	2918	3128
	B	mm	1000	1300	1450	1600	1800
	C	mm	800	1100	1250	1400	1600
	D	mm	510	555	600	628	747
	E	mm	1435	1735	1945	1963	2132
	F	mm	417	462	505	533	667
	G	mm	879	1024	1135	1163	1287
	H	mm	1341	1586	1765	1793	1907
	J	mm	1803	2148	2395	2423	2527
	P	mm	685	988	1140	1290	1378
	Q	mm	80	100	100	100	100
K	°	50	50	50	50	50	
L	°	35	35	35	35	35	
M	°	75	75	75	75	75	
Weight Empty	kg	136/115	245/245	330/334	455/455	660/535	
Inlet/Outlet Connections (BSPF)		RP2	RP2	RP2	RP2	RP2	
T&PR Valve Outlet Connection (BSPF)		RP1¼	RP1¼	RP1¼	RP1¼	RP1¼	
Vent Connection (BSPF)		RP1½	RP2	RP2	RP2	RP2	
Drain Connection (BSPF)		RP1¼	RP1¼	RP1¼	RP1¼	RP1¼	
Remote Thermostat Connection (1 x thermowell supplied)		RP½	RP½	RP½	RP½	RP½	
T&PR Valve Setting (stainless steel/carbon steel)	kPa	850/500	850/500	850/500	850/500	850/500	
Expansion Control Valve (ECV) ¹ Setting (stainless steel/carbon steel)	kPa	700/NA	700/NA	700/NA	700/NA	700/NA	
Maximum Water Supply Pressure							
without ECV ¹ fitted (stainless steel/carbon steel)	kPa	680/400	680/400	680/400	680/400	680/400	
with ECV ¹ fitted (stainless steel/carbon steel)	kPa	550/NA	550/NA	550/NA	550/NA	550/NA	
Maximum Stored Water Temperature	°C	90	90	90	90	90	
Manifold – Min. Centre to Centre (piping one side)	mm	1350	1550	1700	1850	2050	
Manifold – Min. Centre to Centre (piping both sides)	mm	1500	1700	1850	2000	2200	
Maintenance Rate	kWH/day	8.5	10.8	12.3	13.5	15.3	

¹ Expansion control valve not supplied with the water heater.



WATER CAPACITY ABOVE NOMINATED FITTING (Litre)						
Model number		RT1000	RT2000	RT3000	RT4000	RT5000
Storage Capacity (L)		920	2055	2960	3820	5180
Fitting	Dim J	116	235	309	438	695
Fitting	Dim H	345	763	1082	1408	1942
Fitting	Dim G	575	1292	1855	2377	3188
Fitting	Dim F	804	1820	2628	3347	4435
Upper Flange	Dim E	299	623	861	1146	1489
Lower Flange	Dim D	758	1732	2511	3201	4274

ACCESSORY	
Additional Temperature Sensor Well	079438

RHEEM 610 SERIES

SUITED TO INTEGRATION WITH ALMOST ANY SYSTEM



STORAGE



LARGER ANODE



HIGH FLOW CONNECTION



NO PRESSURE DROP

The work-horse storage system that keeps on working, in a wider range of water quality environments.

FLEXIBLE

Compatible with CFWH, Raypak, solar preheat and heat pump storage or as additional storage for a Rheem gas or electric hot water system.

HIGHLY DURABLE IN POOR WATER QUALITY AREAS

Manufactured with commercial grade vitreous enamel and larger anode.

STABLE PRESSURE

No coils means there's virtually no pressure drop.

MORE KEY FEATURES

- Suitable for up to 82°C for sanitising applications
- Range of sizes
- 50mm high flow water connections
- Ease of fitment and replacement

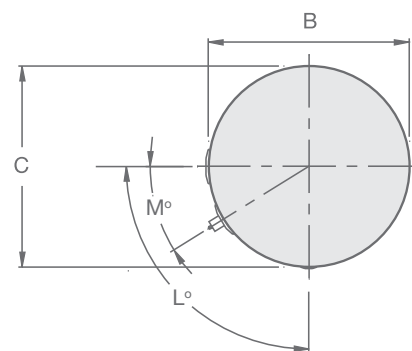
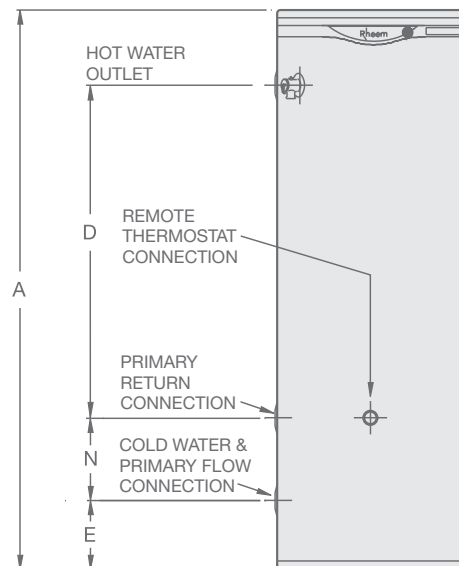


*Conditions Apply: For full terms and conditions please contact Rheem or visit www.rheem.com.au/rheem/help/Warranties

TECHNICAL DATA

DIMENSIONS AND TECHNICAL DATA TABLE				
Model number			610 340	610 430
			Vitreous Enamel	
Storage capacity		Litres	325	410
Dimensions	A	mm	1640	1840
	B	mm	640	685
	C	mm	640	685
	D	mm	1008	1210
	E	mm	115	108
	L	°	90°	84°
	M	°	32°	30°
	N	mm	290	273
Weight Empty		kg	96	117
Inlet/Outlet Connections (BSPF)			RP2	RP2
T&PR Valve Connection (BSPF)			RP $\frac{3}{4}$	RP $\frac{3}{4}$
Remote Thermostat Connection (1 x thermowell supplied)			RP $\frac{1}{2}$	RP $\frac{1}{2}$
T&PR Valve Setting		kPa	1000	1000
Expansion Control Valve (ECV) ¹ Setting		kPa	850	850
Maximum Water Supply Pressure				
without ECV ¹ fitted		kPa	800	800
with ECV ¹ fitted		kPa	680	680
Maximum Stored Water Temperature		°C	82	82
Manifold – Min. Centre to Centre		mm	890	935
Maintenance Rate		kWH/day	3.1	4.3

¹ Expansion control valve not supplied with the water heater.



If you require a lightweight and durable stainless steel tank, consider the 325L Rheem INDURO® Hot Water Storage Tank model 6N0325M0. For further information see page 39.