

**SERVICE CONNECTIONS PROVIDED:**

- (1) HOT WATER OUTLET (HWO)  
FLANGED END TO TABLE E BUTTERFLY VALVE
- (2) NATURAL GAS/LPG INLET (GAS)  
BSPT MALE
- (3) COLD WATER INLET (CWI)  
FLANGED END TO TABLE E BUTTERFLY VALVE
- (4) HOT WATER RETURN (HWR)  
BSP FEMALE BRASS BALL VALVE/STRAINER COMBINATION
- (5) PRESSURE RELIEF VALVE OUTLET  
WASTE WATER DRAIN TO TUNDISH

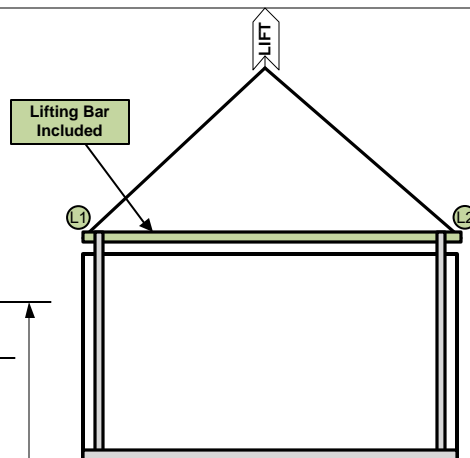
**LIFTING INSTRUCTIONS:**

- 1. PACKAGE LIFTING: TWO (2) POINTS LIFTING WITH ONE (1) LIFTING BAR.
- 2. ONE (1) REMOVABLE CIRCULAR HOLLOW STEEL TUBE INSERTED ACROSS THE TOP OF THE PACKAGE (L1-L2), LOCKED IN PLACE WITH LOCKING INSERTS. EDGES FITTED WITH CROSS BOLT TO PREVENT LIFTING CHAIN FROM SLIPPING OFF.
- 2. LIFT TO BE CONDUCTED ONLY WHEN WIND SPEED IS LESS THAN 23 KM/HR. WIND SPEED SHOWN IS A GUIDE ONLY. CRANE CREW TO USE THEIR DISCRETION
- 3. MAXIMUM HOISTING VELOCITY 1.0M/S
- 4. CARE SHALL BE TAKEN WHILE LIFTING TO ENSURE LIFTING CHAINS ARE EVENLY LOADED BY GENTLY TAKING THE LOAD TO JUST OFF THE GROUND, EXAMINING AND RETURNING TO GROUND PRIOR TO LIFT.

**NOTES:**

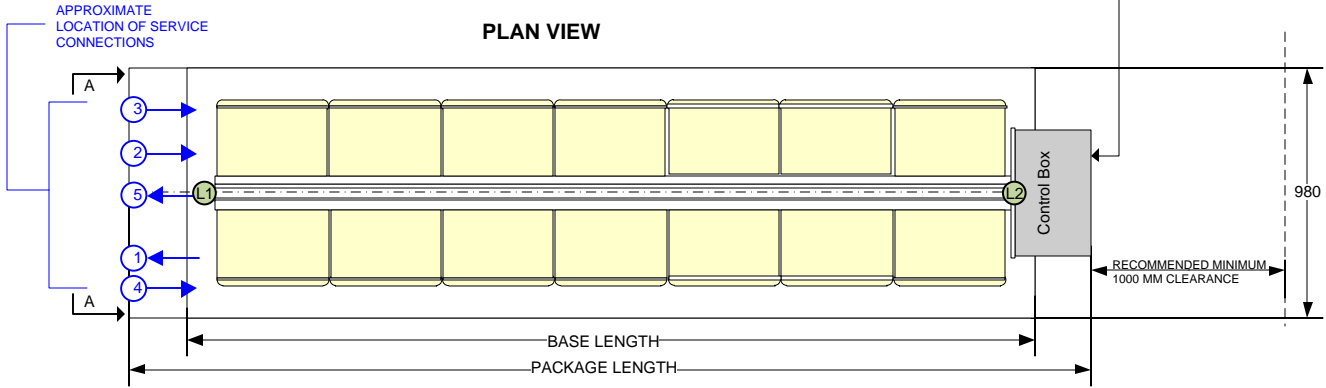
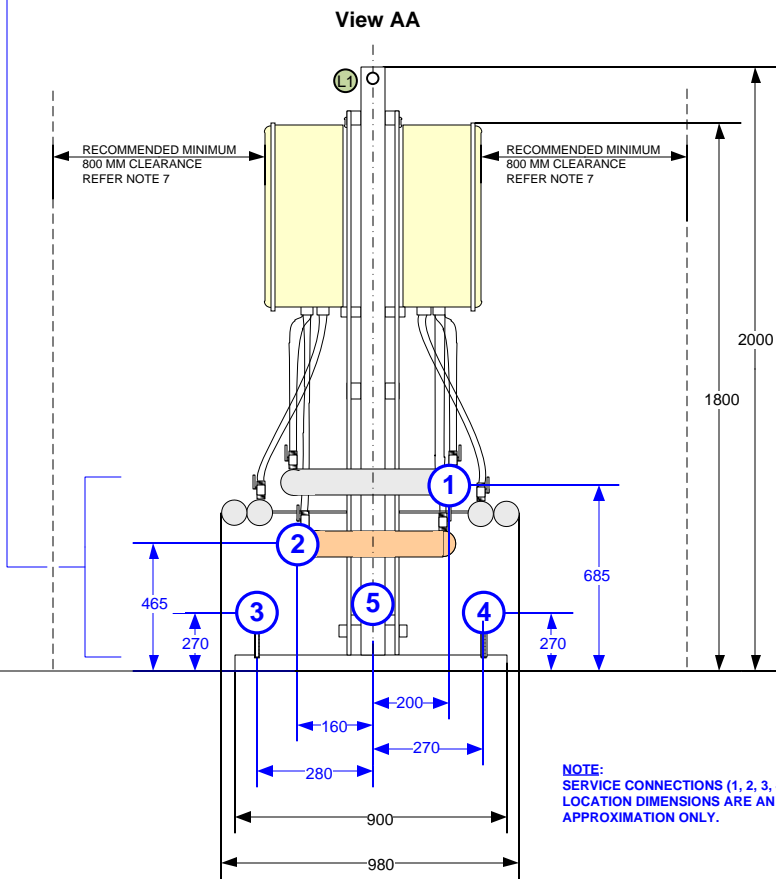
- 1. THIS UNIT IS SUITABLE FOR A FLOW & RETURN OR A DEAD LEG SYSTEM.
- 2. EACH WATER HEATER IS PROVIDED WITH A 240VAC GENERAL PURPOSE POWER OUTLET. EACH PUMP AND ALL POWER OUTLETS ARE PREWIRED TO THE HOT WATER SYSTEM IP65 CONTROL BOX. SUPPLY & INSTALLATION OF 415VAC POWER TO THE CONTROL BOX IS BY OTHERS & SHALL BE IN ACCORDANCE WITH AS/NZS 3000
- 3. GAS SUPPLY & ALL PLUMBING THEREOF IS BY OTHERS & SHALL BE IN ACCORDANCE WITH AS5601
- 4. WATER SUPPLY TO & FROM & ALL PLUMBING THEREOF IS BY OTHERS & SHALL BE IN ACCORDANCE WITH AS3500
- 5. ALL DIMENSIONS ARE IN MM UNLESS OTHERWISE STATED.
- 6. HOT WATER SYSTEM SUITABLE FOR OUTDOOR INSTALLATION ONLY.
- 7. SPACING : RECOMMENDED MINIMUM 1000MM CLEARANCE FROM THE FRONT OF CONTROL PANEL. RECOMMENDED MINIMUM 800MM CLEARANCE FROM THE FRONT OF THE HEATER. REFER AS5601-2004 FIG 5.3 FOR MANDATORY REQUIREMENTS.
- 8. REFER TO INSTALLATION AND OPERATING INSTRUCTION MANUAL FOR ADDITIONAL DETAILS.
- 9. DRAWING SUBJECT TO CHANGE WITHOUT NOTICE.

MODEL	CONNECTION	(1) HWO	(2) GAS	(3) CWI	(4) HWR
CPE13 – CPE16		65	50	65	32
CPE17 – CPE20		65	65	65	32



**CPE13 – CPE20**

POWER SUPPLY REQUIREMENTS : 415V/3PH/50HZ – FOUR (4) CORE & EARTH [4C&E] PROVIDED : IP65 CONTROL BOX PRE-WIRED TO WATER HEATERS & PUMPS	
MODEL	C OR D CURVE UP FRONT PROTECTION
CPE13 – CPE20	16 A



MODEL	BASE LENGTH	PACKAGE LENGTH	WEIGHT KG
CPE13	2700	3310	600
CPE14	2700	3310	630
CPE15	3060	3670	670
CPE16	3060	3670	700

MODEL	BASE LENGTH	PACKAGE LENGTH	WEIGHT KG
CPE17	3420	4030	740
CPE18	3420	4030	770
CPE19	3780	4390	800
CPE20	3780	4390	840

**NOTE:**  
SERVICE CONNECTIONS (1, 2, 3, 4 & 5)  
LOCATION DIMENSIONS ARE AN APPROXIMATION ONLY.

NO	DATE	REVISION	BY	CHECKED
0	07/13	ORIGINAL ISSUE	SL	RH
1	12/13	DIMENSIONAL UPDATES & LIFTING INSTRUCTIONS UPDATES	SL	RH

**RHEEM AUSTRALIA PTY LTD**  
1 Alan Street  
Rydalmere NSW 2116  
Email : [commercialsales@rheem.com.au](mailto:commercialsales@rheem.com.au)  
[www.rheem.com.au](http://www.rheem.com.au)

<b>DESCRIPTION:</b> Rheem Commpak Plus CPE13 – CPE20 Commercial Mains Pressure External Hot Water System Back To Back General Arrangement					
DESIGNED	DRAWN	DATE	SCALE	DRAWING NO.	REVISION
RH	SL	12/12/13	N.T.S	RCMPAKE-13-20	1