

SERVICE CONNECTIONS PROVIDED:

- (1) HOT WATER OUTLET (HWO)
FLANGED END TO TABLE E BUTTERFLY VALVE
- (2) NATURAL GAS/LPG INLET (GAS)
BSPT MALE
- (3) COLD WATER INLET (CWI)
FLANGED END TO TABLE E BUTTERFLY VALVE
- (4) HOT WATER RETURN (HWR)
BSP FEMALE BRASS BALL VALVE/STRAINER COMBINATION
- (5) PRESSURE RELIEF VALVE OUTLET
WASTE WATER DRAIN TO TUNDISH

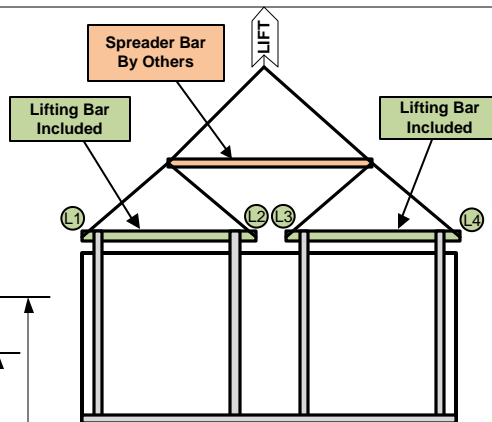
LIFTING INSTRUCTIONS:

1. PACKAGE LIFTING: FOUR (4) POINTS LIFTING WITH TWO (2) LIFTING BARS.
2. TWO (2) REMOVABLE CIRCULAR HOLLOW STEEL TUBES INSERTED ACROSS THE TOP OF THE PACKAGE (L1-L2 & L3-L4), LOCKED IN PLACE WITH LOCKING INSERTS. EDGES FITTED WITH CROSS BOLT TO PREVENT LIFTING CHAIN FROM SLIPPING OFF.
2. LIFT TO BE CONDUCTED ONLY WHEN WIND SPEED IS LESS THAN 23 KM/HR. WIND SPEED SHOWN IS A GUIDE ONLY. CRANE CREW TO USE THEIR DISCRETION
3. MAXIMUM HOISTING VELOCITY 1.0M/S
4. CARE SHALL BE TAKEN WHILE LIFTING TO ENSURE LIFTING CHAINS ARE EVENLY LOADED BY GENTLY TAKING THE LOAD TO JUST OFF THE GROUND, EXAMINING AND RETURNING TO GROUND PRIOR TO LIFT.

NOTES:

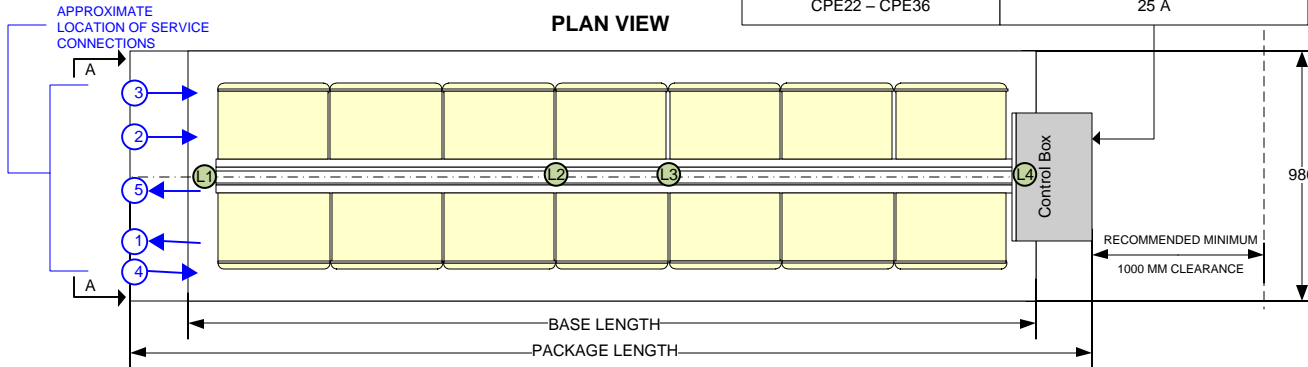
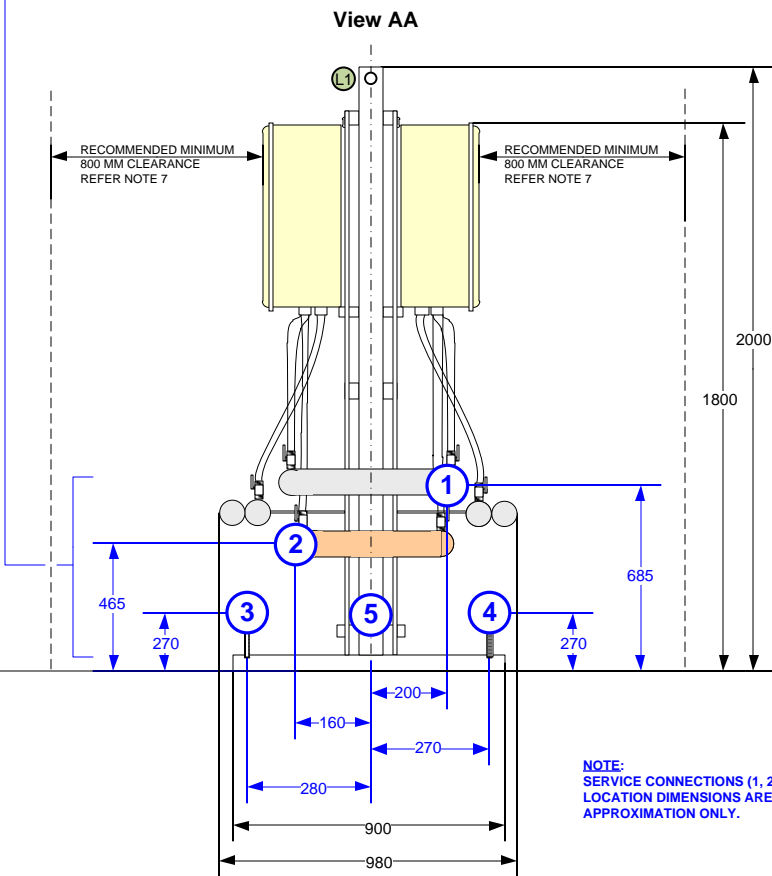
1. THIS UNIT IS SUITABLE FOR A FLOW & RETURN OR A DEAD LEG SYSTEM.
2. EACH WATER HEATER IS PROVIDED WITH A 240VAC GENERAL PURPOSE POWER OUTLET. EACH PUMP AND ALL POWER OUTLETS ARE PREWIRED TO THE HOT WATER SYSTEM IP65 CONTROL BOX. SUPPLY & INSTALLATION OF 415VAC POWER TO THE CONTROL BOX IS BY OTHERS & SHALL BE IN ACCORDANCE WITH AS/NZS 3000
3. GAS SUPPLY & ALL PLUMBING THEREOF IS BY OTHERS & SHALL BE IN ACCORDANCE WITH AS5601
4. WATER SUPPLY TO & FROM & ALL PLUMBING THEREOF IS BY OTHERS & SHALL BE IN ACCORDANCE WITH AS3500
5. ALL DIMENSIONS ARE IN MM UNLESS OTHERWISE STATED.
6. HOT WATER SYSTEM SUITABLE FOR OUTDOOR INSTALLATION ONLY.
7. SPACING : RECOMMENDED MINIMUM 1000MM CLEARANCE FROM THE FRONT OF CONTROL PANEL. RECOMMENDED MINIMUM 800MM CLEARANCE FROM THE FRONT OF THE HEATER. REFER AS5601-2004 FIG 5.3 FOR MANDATORY REQUIREMENTS.
8. REFER TO INSTALLATION AND OPERATING INSTRUCTION MANUAL FOR ADDITIONAL DETAILS.
9. DRAWING SUBJECT TO CHANGE WITHOUT NOTICE.

MODEL	CONNECTION	(1) HWO	(2) GAS	(3) CWI	(4) HWR
CPE21 – CPE28		80	65	80	40
CPE29 – CPE32		100	65	100	50
CPE33 – CPE36		100	80	100	50



CPE21 – CPE36

POWER SUPPLY REQUIREMENTS : 415V/3PH/50HZ – FOUR (4) CORE & EARTH [4C&E] PROVIDED : IP65 CONTROL BOX PRE-WIRED TO WATER HEATERS & PUMPS	
MODEL	C OR D CURVE UP FRONT PROTECTION
CPE21	20 A
CPE22 – CPE36	25 A



MODEL	BASE LENGTH	PACKAGE LENGTH	WEIGHT KG
CPE21	4140	4750	870
CPE22	4140	4750	900
CPE23	4500	5110	940
CPE24	4500	5110	970
CPE25	4860	5470	1000
CPE26	4860	5470	1040

MODEL	BASE LENGTH	PACKAGE LENGTH	WEIGHT KG
CPE27	5220	5830	1070
CPE28	5220	5830	1100
CPE29	5580	6190	1140
CPE30	5580	6190	1170
CPE31	5940	6550	1200
CPE32	5940	6550	1240

MODEL	BASE LENGTH	PACKAGE LENGTH	WEIGHT KG
CPE33	6300	6910	1270
CPE34	6300	6910	1300
CPE35	6660	7270	1340
CPE36	6660	7270	1370

NOTE:
SERVICE CONNECTIONS (1, 2, 3, 4 & 5)
LOCATION DIMENSIONS ARE AN APPROXIMATION ONLY.

NO	DATE	REVISION	BY	CHECKED
0	07/13	ORIGINAL ISSUE	SL	RH
1	12/13	DIMENSIONAL UPDATES & LIFTING INSTRUCTIONS UPDATES	SL	RH

RHEEM AUSTRALIA PTY LTD
1 Alan Street
Rydalmere NSW 2116
Email : commercialsales@rheem.com.au
www.rheem.com.au

DESCRIPTION: Rheem Commpak Plus CPE21 – CPE36 Commercial Mains Pressure External Hot Water System Back To Back General Arrangement					
DESIGNED	DRAWN	DATE	SCALE	DRAWING NO:	REVISION
RH	SL	12/12/13	N.T.S	RCMPAKE-21-36	1