

SERVICE CONNECTIONS PROVIDED:

- (1) HOT WATER OUTLET (HWO)
FLANGED END TO TABLE E BUTTERFLY VALVE
- (2) NATURAL GAS/LPG INLET (GAS)
BSP MALE
- (3) COLD WATER INLET (CWI)
FLANGED END TO TABLE E BUTTERFLY VALVE
- (4) HOT WATER RETURN (HWR)
BSP FEMALE BRASS BALL VALVE/STRAINER COMBINATION
- (5) PRESSURE RELIEF VALVE OUTLET
WASTE WATER DRAIN TO TUNDISH

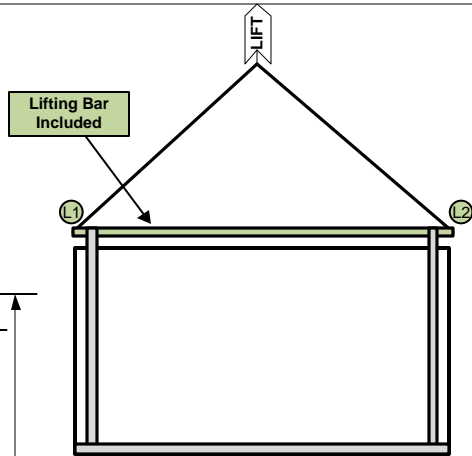
LIFTING INSTRUCTIONS:

- 1. PACKAGE LIFTING: TWO (2) POINTS LIFTING WITH ONE (1) LIFTING BAR.
- 2. ONE (1) REMOVABLE CIRCULAR HOLLOW STEEL TUBE INSERTED ACROSS THE TOP OF THE PACKAGE (L1-L2), LOCKED IN PLACE WITH LOCKING INSERTS, EDGES FITTED WITH CROSS BOLT TO PREVENT LIFTING CHAIN FROM SLIPPING OFF.
- 2. LIFT TO BE CONDUCTED ONLY WHEN WIND SPEED IS LESS THAN 23 KM/HR. WIND SPEED SHOWN IS A GUIDE ONLY. CRANE CREW TO USE THEIR DISCRETION
- 3. MAXIMUM HOISTING VELOCITY 1.0M/S
- 4. CARE SHALL BE TAKEN WHILE LIFTING TO ENSURE LIFTING CHAINS ARE EVENLY LOADED BY GENTLY TAKING THE LOAD TO JUST OFF THE GROUND, EXAMINING AND RETURNING TO GROUND PRIOR TO LIFT.

NOTES:

- 1. THIS UNIT IS SUITABLE FOR A FLOW & RETURN OR A DEAD LEG SYSTEM.
- 2. EACH WATER HEATER IS PROVIDED WITH A 240VAC GENERAL PURPOSE POWER OUTLET. EACH PUMP AND ALL POWER OUTLETS ARE WIRED TO THE HOT WATER SYSTEM IP54 CONTROL BOX. SUPPLY & INSTALLATION OF 415VAC POWER TO THE CONTROL BOX IS BY OTHERS & SHALL BE IN ACCORDANCE WITH AS/NZS 3000
- 3. GAS SUPPLY & ALL PLUMBING THEREOF IS BY OTHERS & SHALL BE IN ACCORDANCE WITH AS5601
- 4. WATER SUPPLY TO & FROM & ALL PLUMBING THEREOF IS BY OTHERS & SHALL BE IN ACCORDANCE WITH AS3500
- 5. ALL DIMENSIONS ARE IN MM UNLESS OTHERWISE STATED.
- 6. HOT WATER SYSTEM SUITABLE FOR INDOOR INSTALLATION ONLY. EACH WATER HEATER TO BE INDIVIDUALLY FLUED TO OUTSIDE USING COAXIAL FLUES ONLY.
- 7. SPACING : RECOMMENDED MINIMUM 800MM CLEARANCE FROM THE FRONT OF THE HEATER. RECOMMENDED MINIMUM 1000MM CLEARANCE FROM THE FRONT OF CONTROL PANEL.
- 8. REFER TO INSTALLATION AND OPERATING INSTRUCTION MANUAL FOR ADDITIONAL DETAILS.
- 9. DRAWING SUBJECT TO CHANGE WITHOUT NOTICE.

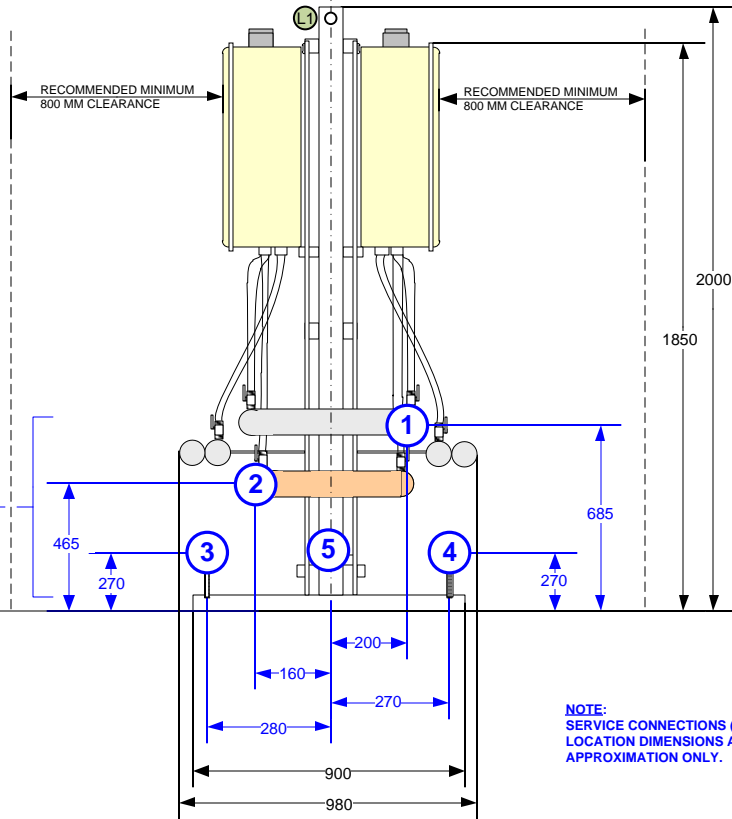
MODEL	CONNECTION	(1) HWO	(2) GAS	(3) CWI	(4) HWR
CPI13 – CPI16		65	50	65	32
CPI17 – CPI20		65	65	65	32



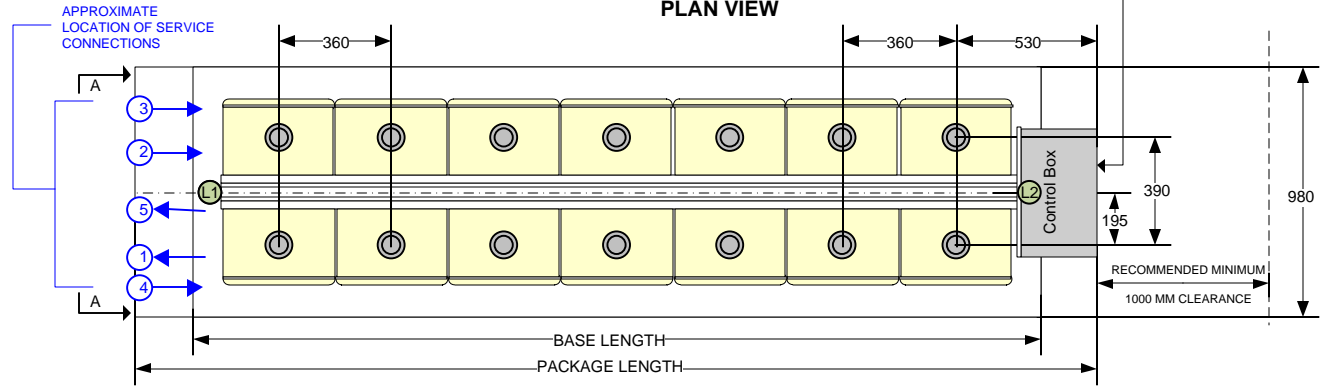
CPI13 – CPI20

POWER SUPPLY REQUIREMENTS : 415V/3PH/50HZ - FOUR (4) CORE & EARTH (4C&E)	
PROVIDED : IP54 CONTROL BOX PRE-WIRED TO WATER HEATERS & PUMPS	
MODEL	C OR D CURVE UP FRONT PROTECTION
CPI13 – CPI20	16 A

View AA



PLAN VIEW



MODEL	BASE LENGTH	PACKAGE LENGTH	WEIGHT KG
CPI13	2700	3310	600
CPI14	2700	3310	630
CPI15	3060	3670	670
CPI16	3060	3670	700

MODEL	BASE LENGTH	PACKAGE LENGTH	WEIGHT KG
CPI17	3420	4030	740
CPI18	3420	4030	770
CPI19	3780	4390	800
CPI20	3780	4390	840

NO	DATE	REVISION	BY	CHECKED
0	07/13	ORIGINAL ISSUE	SL	RH
1	12/13	DIMENSIONAL UPDATES & LIFTING INSTRUCTIONS UPDATES	SL	RH

RHEEM AUSTRALIA PTY LTD
 1 Alan Street
 Rydalmere NSW 2116
 Email : commercialsales@rheem.com.au
www.rheem.com.au

DESCRIPTION:					
Rheem Compak Plus CPI13 – CPI20 Commercial Mains Pressure Internal Hot Water System Back To Back General Arrangement					
DESIGNED	DRAWN	DATE	SCALE	DRAWING NO:	REVISION
RH	SL	12/12/13	N.T.S	RCMPAKI-13-20	1