

SERVICE CONNECTIONS PROVIDED:

- (1) HOT WATER OUTLET (HWO)
FLANGED END TO TABLE E BUTTERFLY VALVE
- (2) NATURAL GAS/LPG INLET (GAS)
BSP MALE
- (3) COLD WATER INLET (CWI)
FLANGED END TO TABLE E BUTTERFLY VALVE
- (4) HOT WATER RETURN (HWR)
BSP FEMALE BRASS BALL VALVE/STRAINER COMBINATION
- (5) PRESSURE RELIEF VALVE OUTLET
WASTE WATER DRAIN TO TUNDISH

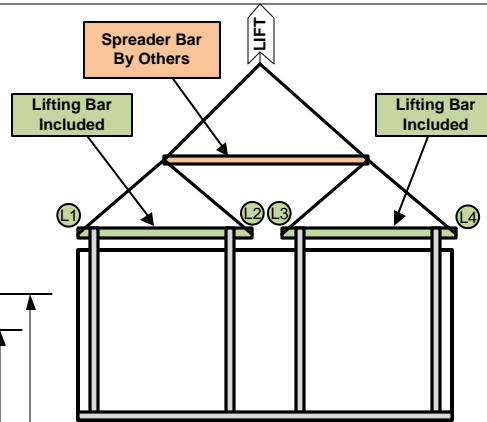
LIFTING INSTRUCTIONS:

1. PACKAGE LIFTING: FOUR (4) POINTS LIFTING WITH TWO (2) LIFTING BARS.
2. TWO (2) REMOVABLE CIRCULAR HOLLOW STEEL TUBES INSERTED ACROSS THE TOP OF THE PACKAGE (L1-L2 & L3-L4), LOCKED IN PLACE WITH LOCKING INSERTS, EDGES FITTED WITH CROSS BOLT TO PREVENT LIFTING CHAIN FROM SLIPPING OFF.
3. LIFT TO BE CONDUCTED ONLY WHEN WIND SPEED IS LESS THAN 23 KM/HR. WIND SPEED SHOWN IS A GUIDE ONLY. CRANE CREW TO USE THEIR DISCRETION
4. MAXIMUM HOISTING VELOCITY 1.0M/S
5. CARE SHALL BE TAKEN WHILE LIFTING TO ENSURE LIFTING CHAINS ARE EVENLY LOADED BY GENTLY TAKING THE LOAD TO JUST OFF THE GROUND, EXAMINING AND RETURNING TO GROUND PRIOR TO LIFT.

NOTES:

1. THIS UNIT IS SUITABLE FOR A FLOW & RETURN OR A DEAD LEG SYSTEM.
2. EACH WATER HEATER IS PROVIDED WITH A 240VAC GENERAL PURPOSE POWER OUTLET. EACH PUMP AND ALL POWER OUTLETS ARE PREWIRED TO THE HOT WATER SYSTEM IP54 CONTROL BOX. SUPPLY & INSTALLATION OF 415VAC POWER TO THE CONTROL BOX IS BY OTHERS & SHALL BE IN ACCORDANCE WITH AS/NZS 3000
3. GAS SUPPLY & ALL PLUMBING THEREOF IS BY OTHERS & SHALL BE IN ACCORDANCE WITH AS5601
4. WATER SUPPLY TO & FROM & ALL PLUMBING THEREOF IS BY OTHERS & SHALL BE IN ACCORDANCE WITH AS3500
5. ALL DIMENSIONS ARE IN MM UNLESS OTHERWISE STATED.
6. HOT WATER SYSTEM SUITABLE FOR INDOOR INSTALLATION ONLY. EACH WATER HEATER TO BE INDIVIDUALLY FLUED TO OUTSIDE USING COAXIAL FLUES ONLY.
7. SPACING : RECOMMENDED MINIMUM 800MM CLEARANCE FROM THE FRONT OF THE HEATER. RECOMMENDED MINIMUM 1000MM CLEARANCE FROM THE FRONT OF CONTROL PANEL.
8. REFER TO INSTALLATION AND OPERATING INSTRUCTION MANUAL FOR ADDITIONAL DETAILS.
9. DRAWING SUBJECT TO CHANGE WITHOUT NOTICE.

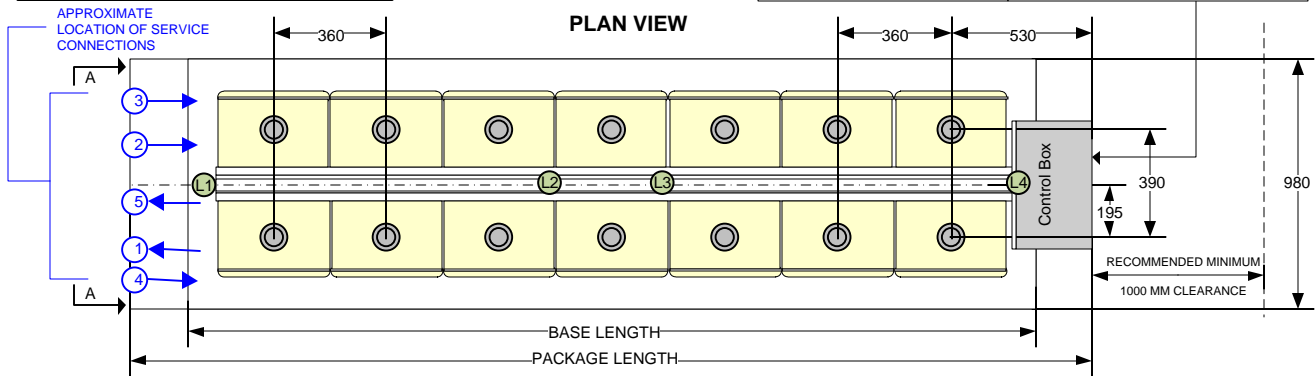
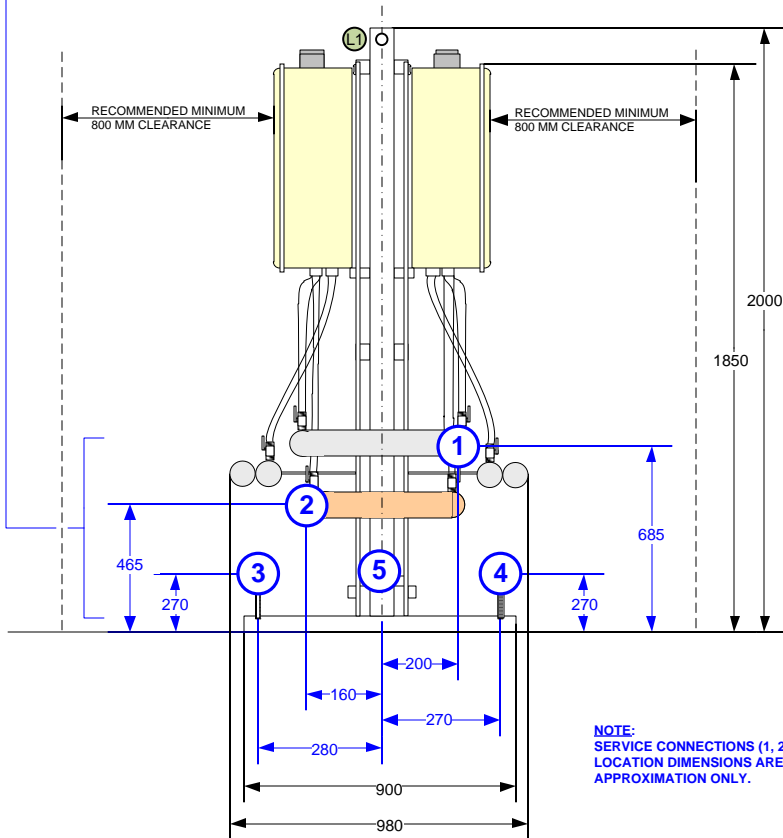
MODEL	CONNECTION	(1) HWO	(2) GAS	(3) CWI	(4) HWR
CPI21 – CPI28		80	65	80	40
CPI29 – CPI32		100	65	100	50
CPI33 – CPI36		100	80	100	50



CPI21 – CPI36

POWER SUPPLY REQUIREMENTS : 415V/3PH/50HZ - FOUR (4) CORE & EARTH (4C&E) PROVIDED : IP54 CONTROL BOX PRE-WIRED TO WATER HEATERS & PUMPS	
MODEL	C OR D CURVE UP FRONT PROTECTION
CPI21	20 A
CPI22 – CPI36	25 A

View AA



MODEL	BASE LENGTH	PACKAGE LENGTH	WEIGHT KG
CPI21	4140	4750	870
CPI22	4140	4750	900
CPI23	4500	5110	940
CPI24	4500	5110	970
CPI25	4860	5470	1000
CPI26	4860	5470	1040

MODEL	BASE LENGTH	PACKAGE LENGTH	WEIGHT KG
CPI27	5220	5830	1070
CPI28	5220	5830	1100
CPI29	5580	6190	1140
CPI30	5580	6190	1170
CPI31	5940	6550	1200
CPI32	5940	6550	1240

MODEL	BASE LENGTH	PACKAGE LENGTH	WEIGHT KG
CPI33	6300	6910	1270
CPI34	6300	6910	1300
CPI35	6660	7270	1340
CPI36	6660	7270	1370

NO	DATE	REVISION	BY	CHECKED	DESCRIPTION:												
0	07/13	ORIGINAL ISSUE	SL	RH	RHEEM AUSTRALIA PTY LTD 1 Alan Street Rydalmere NSW 2116 Email : commercialsales@rheem.com.au www.rheem.com.au												
1	12/13	DIMENSIONAL UPDATES & LIFTING INSTRUCTIONS UPDATES	SL	RH													
					<table border="1"> <thead> <tr> <th>DESIGNED</th> <th>DRAWN</th> <th>DATE</th> <th>SCALE</th> <th>DRAWING NO:</th> <th>REVISION</th> </tr> </thead> <tbody> <tr> <td>RH</td> <td>SL</td> <td>12/12/13</td> <td>N.T.S</td> <td>RCMPAKI-21-36</td> <td>1</td> </tr> </tbody> </table>	DESIGNED	DRAWN	DATE	SCALE	DRAWING NO:	REVISION	RH	SL	12/12/13	N.T.S	RCMPAKI-21-36	1
DESIGNED	DRAWN	DATE	SCALE	DRAWING NO:	REVISION												
RH	SL	12/12/13	N.T.S	RCMPAKI-21-36	1												